



Garsdale Close, Bournemouth, BH11 9DL

Asking Price £269,950

- Two Bedrooms
- UPVC Conservatory
- Good Size Rear Garden
- No Forward Chain
- End Of Terrace House
- Gas Central Heating
- Allocated Parking
- Cul-De-Sac Position
- UPVC Double Glazing
- Ideal FTB Or BTL Investment

NO FORWARD CHAIN / CUL-DE-SAC LOCATION / GOOD SIZE REAR GARDEN >>> Greys Estate Agents are delighted to offer for sale this end of terrace house situated on a corner plot in Garsdale Road, within the popular Bear Cross area of Bournemouth. The property comprises: Two bedrooms, lounge, kitchen / dining room, UPVC conservatory and a bathroom. Other benefits in UPVC double glazing, gas central heating, a good size rear garden and allocated off road parking.



LOUNGE

13'2" x 12'11"

KITCHEN / DINING AREA

13'0" x 9'2"

CONSERVATORY

BEDROOM ONE

11'7" x 9'4"

BEDROOM TWO

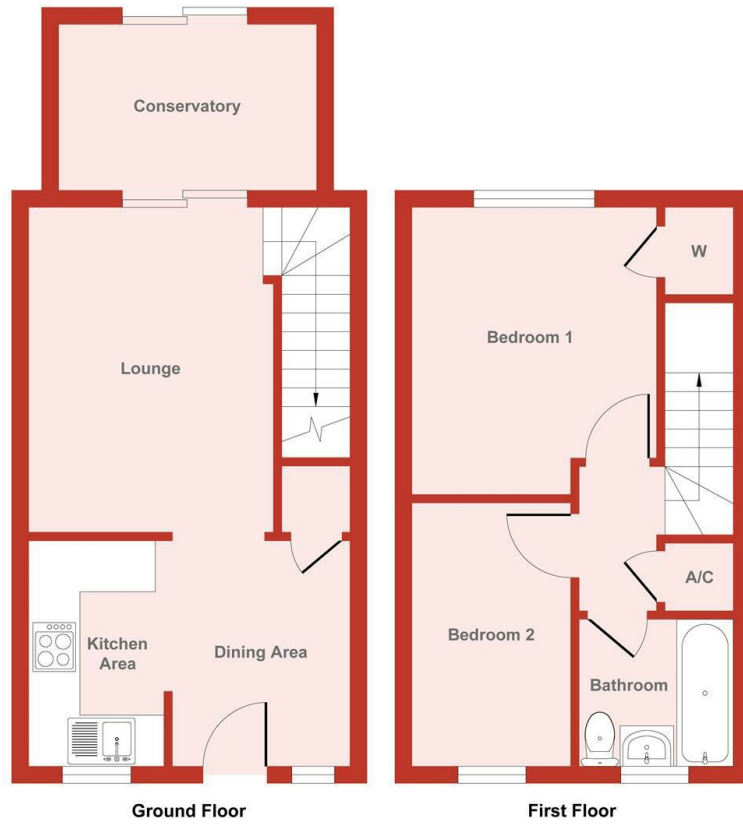
11'1" x 6'6"

BATHROOM

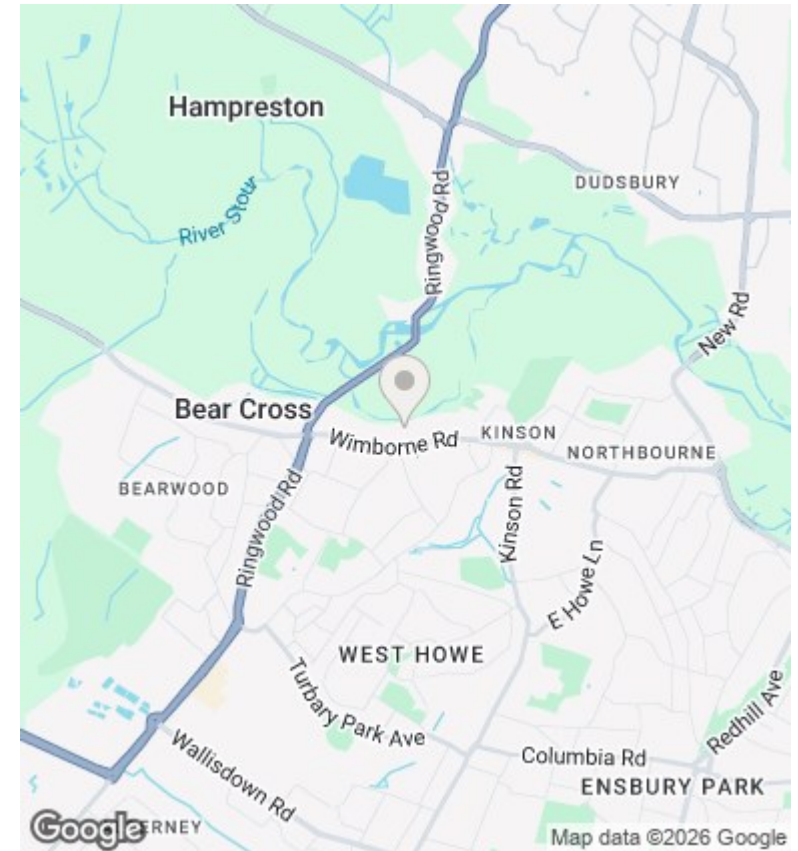








Produced by Elements Property



Viewings

Viewings by arrangement only. Call 01202 749390 to make an appointment.

C